



ILMATIETEEN LAITOS
METEOROLOGISKA INSTITUTET
FINNISH METEOROLOGICAL INSTITUTE



CBC 2014-2020
SOUTH-EAST FINLAND - RUSSIA

CBC Green InterTraffic – Enhancing environmental and traffic safety through cooperation

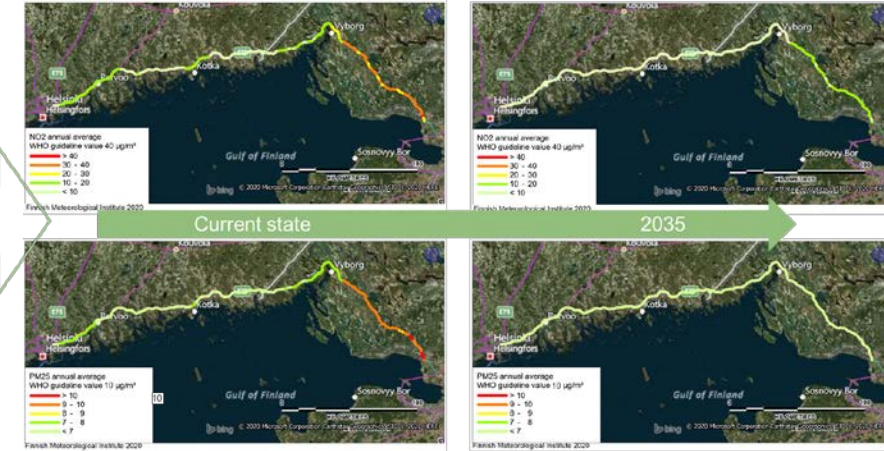
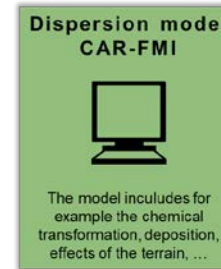
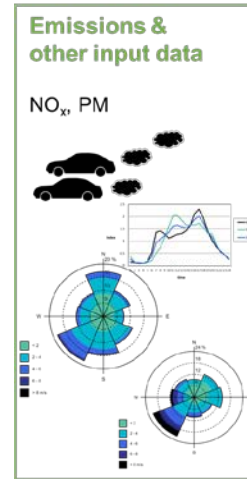
Harri Pietarila
Director of Expert Services
Finnish Meteorological Institute
harri.pietarila@fmi.fi
+358 50 337 8224



Green InterTraffic

Air quality assessment and monitoring

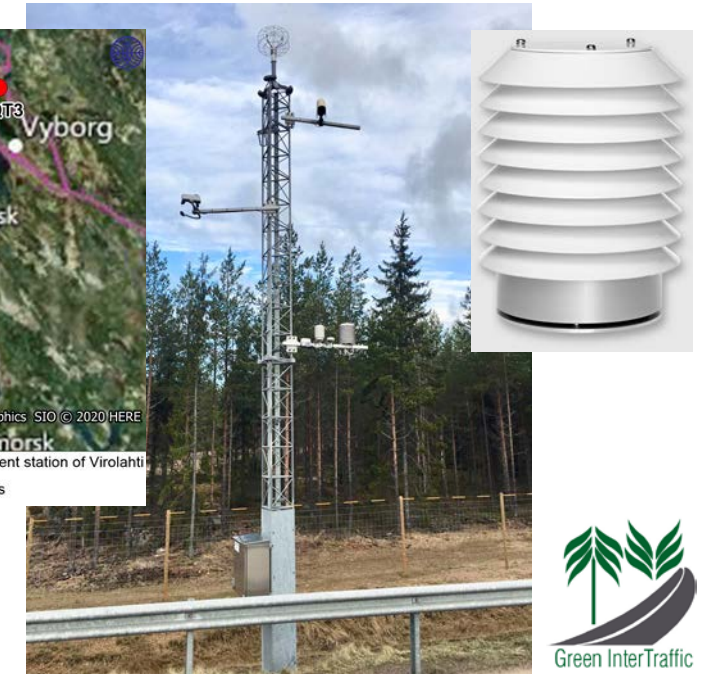
- Common, transparent and comparable methodologies
- Piloting new innovative observations with AQ and road weather integration
- Real time data exchange between Russia and Finland
- Real time dissemination to public and road users
- Air quality now & future scenarios
- Impacts to health and economy



● = Background measurement station of Virolahti
● = AQT measurement sites

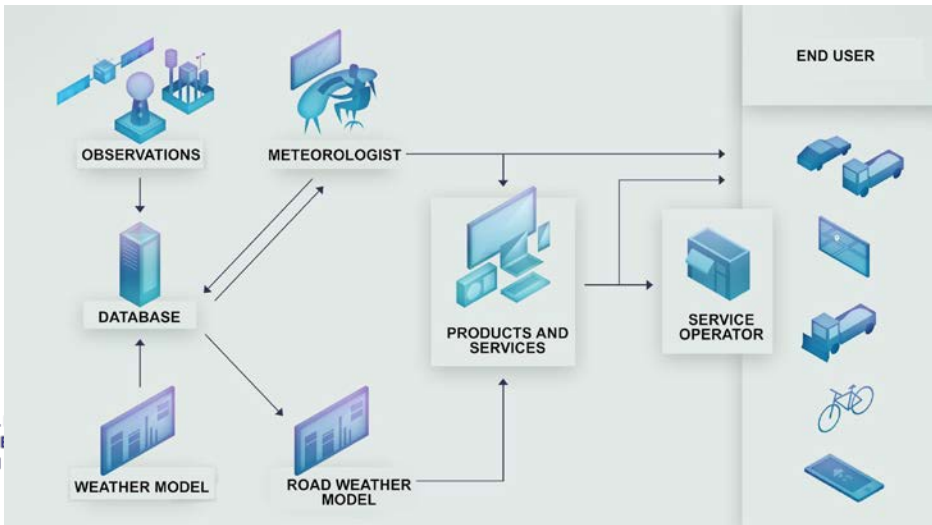
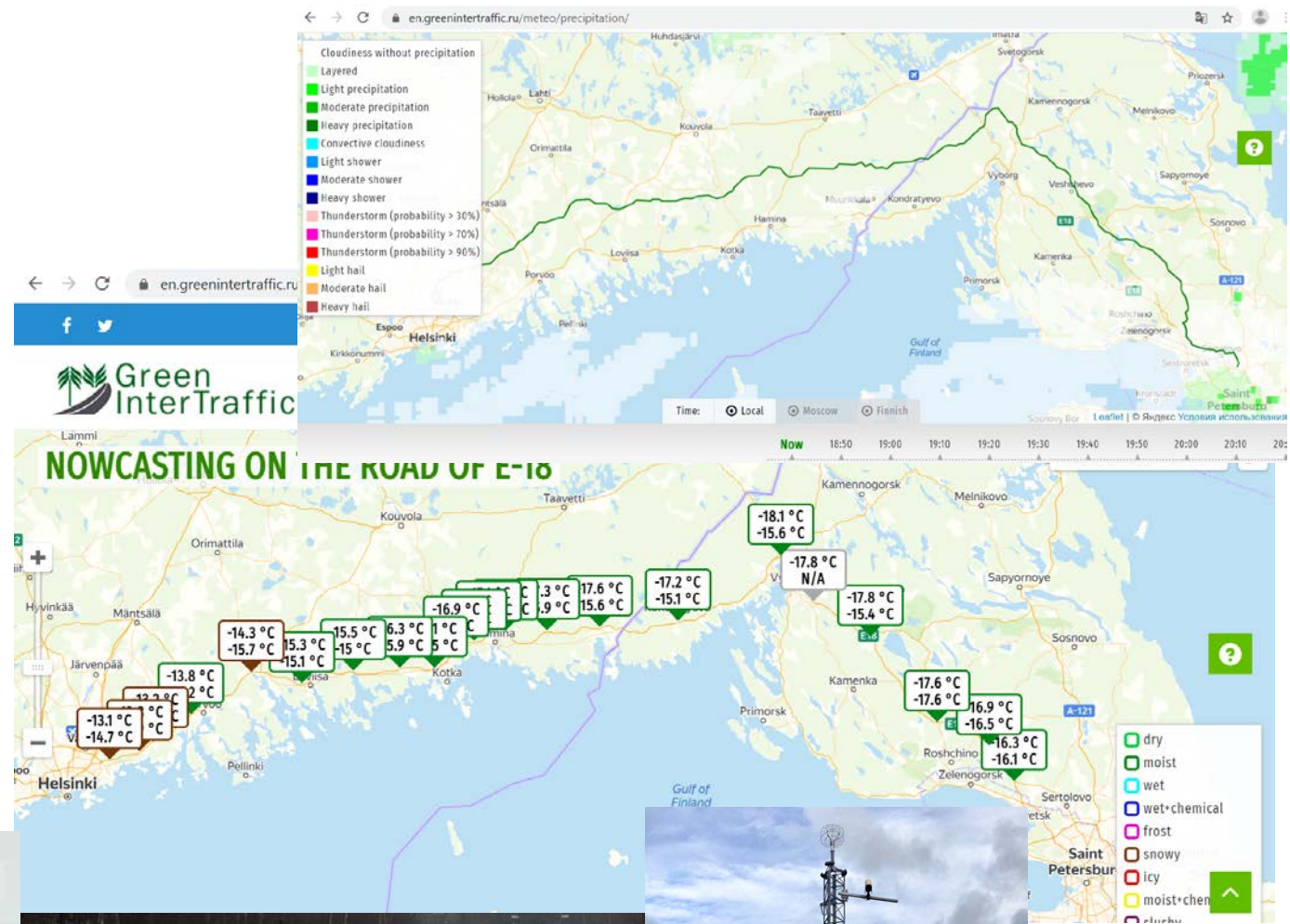


CBC 2014-2020
SOUTH-EAST FINLAND - RUSSIA



Road Weather

- Transparent and comparable road weather forecasting methodologies
- Precipitation observations and forecasts
- Real time data exchange of observations and forecasts between Russia and Finland
- Real time dissemination to public and road users
- Road weather now & forecast



Thank you!

Harri Pietarila

Director of Expert Services

Finnish Meteorological Institute

harri.pietarila@fmi.fi

p. +358 50 337 8224



ILMATIETEEN LAITOS
METEOROLOGISKA INSTITUTET
FINNISH METEOROLOGICAL INSTITUTE